

Driving innovation

IONIQ hybrid



Experience the future of mobility in your daily life.

Welcome to the future.

Leadership in the new era of zero emissions mobility is being realized through our development of innovative green technologies that are continually raising the industry standard for fuel efficiency.



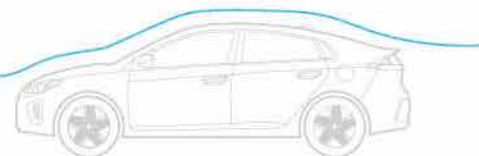




What a pleasant surprise.

A pioneering design that marries form with function, IONIQ hybrid's striking, coupé-style silhouette certainly creates a strong first impression. But looking beyond the sleek aerodynamics you will discover subtle design details that enhance every aspect of driving dynamics and efficiency.

Aerodynamic Cd 0.24¹



Radiator grille

The new mesh-type grille adds a strong 3D effect for emphasis and maximum visual impact while serving its intended function.



LED rear combination lamps

Not only gorgeous, the new chevron pattern with its wraparound setup is simple and certain to get immediate attention.



Rear bumper

Fresh, new colors for the bottom insert and lower lip amplify the two-tone effect to make the bumper look sportier than ever.



The GLS model with optional equipment is shown here.

Elegance and peace of mind.

With its disciplined focus on layout simplicity and good ergonomics, the interior advances the evolution of trendsetting design. As forward-thinking as the exterior, the interior abounds with fine touches that bring all the key elements to life in fluid, elegant style. Every detail is precisely designed around the philosophy of clean simplicity for a calming, soothing effect on the senses.

Supervision cluster with 7" color LCD

All vital car system information is presented with astounding legibility and colorful graphic format that only Supervision technology can deliver.

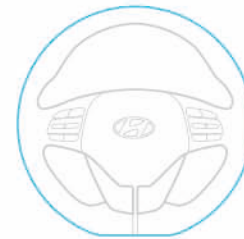


8-inch display audio

IONIQ's nerve center does more than keep you on course. It offers total smartphone connectivity through a simple-to-use touchscreen interface.



D-cut steering wheel



Touchscreen air conditioning controller

Just as you would expect of Hyundai's high-tech flagship, the touchscreen AC controller is a cut above the rest and looks very cool indeed.







Driving freedom with no compromises.

Driving freedom enters a new dimension with IONIQ's driver safety assist systems that act like a co-pilot to help you drive safe. IONIQ's advanced systems like Blind Spot Collision Warning and Rear Parking Assist take much of the worry and stress out of driving. Just sit back, relax and enjoy the drive.

Rear Parking Sensors

Ultrasound sensors built into the rear bumper monitor the distance between the vehicle and obstacles in rear of the IONIQ. The alarm sound interval varies according to the distance between the vehicle and the object thus increasing convenience and safety



7-airbag system

Should the unexpected ever happen, seven airbags provide the ultimate protection. Up front, a pair of front airbags and another pair of side airbags for thorax protection with the driver getting added protection from a knee airbag. Full-length curtain airbags defend against side collisions.



The GLS model with optional equipment is shown here.



Kappa 1.6L Atkinson-cycle GDi engine

Two hearts, one beat.

The epitome of forward-thinking motoring, the 1.6-litre GDi direct-injection petrol engine is intelligently engineered to work in unison with the electric motor to deliver maximum power and optimal fuel economy. Full torque is instantly available resulting in silk-smooth acceleration and a truly agile driving experience that surpasses all other cars in its class.



Advanced high-strength steels

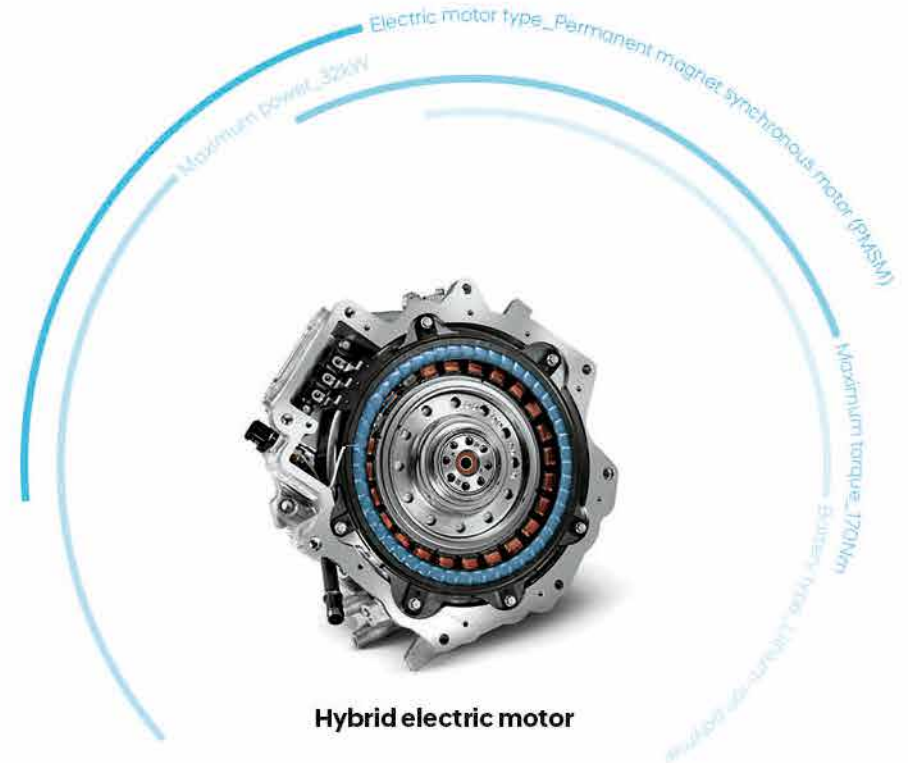
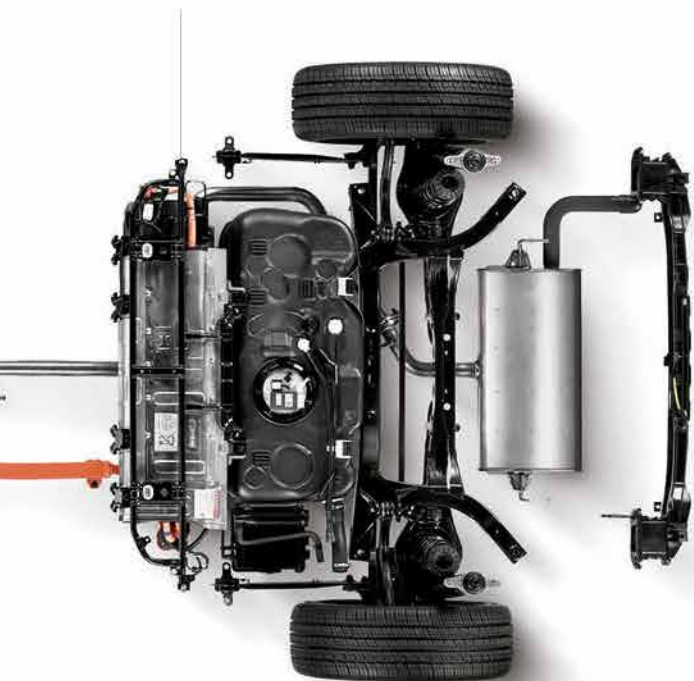
The usage of advanced high-strength steel alloys has been expanded to 53 percent of the body structure. To attain unprecedented levels of structural rigidity, critical components were fabricated using advanced hot stamping technology.





Low center of gravity

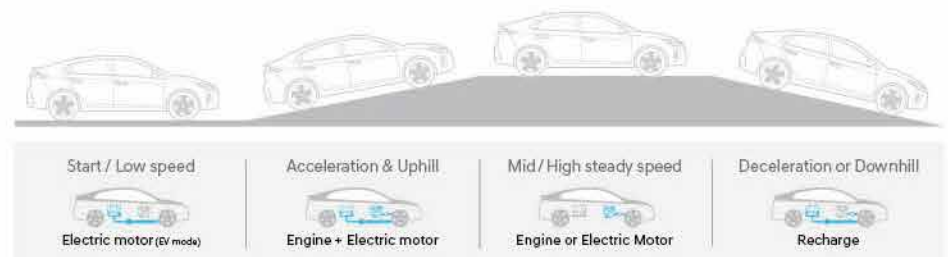
By mounting the battery under the seats, IONIQ is able to attain an exceptionally low center of gravity. This greatly enhances agility and helps make IONIQ so much fun to drive.



Hybrid electric motor

Predictive energy management

The battery management system optimizes energy storage by recovering braking energy to help recharge the batteries and by continuously collecting and analyzing data on your travel routes and driving habits. Advanced algorithms are employed to switch seamlessly between pure electric drive, pure gasoline propulsion or combined mode as battery reserve power and driving conditions permit.





Features

(The GLS model with optional equipment is shown here)

LED headlamps



Front safety power window



LED DRL



Chrome door scuffs



Power sunroof



Rear spoiler

Mood lamp



Chrome Beltline molding & door side molding



Multi-functional center storage console



Paddle shifters



Heavier D-Cut steering feel



Console Air Vents

Exterior colors



Polar White (WAW)



Fluidic Metal (M6T)



Iron Gray (YT3)



Phantom Black (NKA)



Liquid Sand (S5P)



Intense Blue (YP5)



Fiery Red (PR2)

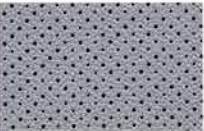
Interior colors



Leather



Leather



Leather



Woven

Wheels



15" alloy wheels

Specifications

ENGINE

Type	GDi gasoline engine
Displacement (cc)	1,580
Max. power (PS/ rpm)	104/ 5,700
Max. torque (kg-m/ rpm)	15.0/ 4,000

ELECTRIC MOTOR

Type	Permanent magnet synchronous motor (PMSM)
Max. power (HP)	43
Max. torque (Nm)	170
Battery type	Lithium-ion polymer

DIMENSIONS

Head room (mm)	Front/ rear (w/o sunroof)	994/ 950
Leg room (mm)	Front/ rear	1,073/ 906
Shoulder room (mm)	Front/ rear	1,425/ 1,396
Luggage capacity (liter)	Up to roof	563
	Rear seats down, up to roof	1,518

- The above values are based on internal testing results and are subject to change after final validation.
- Some of the equipment illustrated or described in this catalog may not be supplied as standard equipment and may be available at extra cost.
- Hyundai Nishat Motor (Pvt.) Ltd. reserves the right to change specifications and equipment without prior notice.
- The color plates shown may vary slightly from the actual colors due to the limitations of the printing process.
- Please consult your dealer for full information and availability on colors and trims.

Unit : mm



Wheel tread* 1,549
Overall width 1,820



Wheel base 2,700
Overall length 4,470

Overall height
1,450



Wheel tread* 1,563

*Wheel tread : 15" (front/ rear) - 1,563/1,577

Specifications

Segment			GLS
Dimensions	Body Type		5 Door Lift Back
	Exterior L x W x H (mm)		4470x1820x1450
	Wheelbase (mm)		2700
	Ground Clearance (mm)		140
	Gross Vehicle Weight (kg)		1370
	Minimum Turning Radius (m)		5,3
	Number of Doors		5 doors
	Seating Capacity		5 persons
	Number of Seating Rows		2 rows
Engine	Fuel Type		Gasoline-Electric
	Emission Standard		Euro 5
	Displacement (cc)		1580
	Engine Type		GDI Gasoline Engine
	Cylinders		In-Line 4-Cylinder
	Compression Ratio		13,0 : 1
	Fuel Tank Capacity (l)		45
	Drive		Front Wheel
Drive Type & Transmission	Transmission		6-Speed DCT With Paddle Shifters
	Wheel & Tire	Wheel Type	Alloy Wheel
Wheel Size		15"	
		Tire Size	195/65/R15
Spare Tire		Full Size Wheel & Tire	✓
		Wheel Type	Alloy
Steering Wheel	Steering Wheel	Material	3-Spoke Leather
		Power Steering	Electric
		Adjustment	Manual Tilt & Telescopic
	TGS Knob		Leather

Segment			GLS
Air Bag	Driver		✓
	Passenger		✓
	Curtain		✓
	Knee		✓
Brake	Brake	Front	Disc
		Rear	Disc
	Anti-Lock Braking System (ABS)		✓
	Electronic Stability Control (ESC)		✓
	Hill-Start Assist Control (HAC)		✓
	Electronic Parking Brake (EPB)		✓
Locks & Security	Door Locking	Central Door Locking	✓
		Child Safety Lock	✓
	Key Set	Keyless Entry	✓
		Push Start Button	✓
	Immobilizer		✓
Exterior	Front Radiator Grille		3D Mesh Type
	Bumper	Front	Two tone
		Rear	Two tone
	Side Mirror	Finish	Body Colour
		Electrically Adjustable	✓
		Electrically Retractable	✓
		With Turn Signal	✓
	Puddle Lamp		✓
	Side Molding		Chrome Finishing
	Side sill		Chrome
	Spoiler with HMSL		✓
	Belt Line		Chrome
	Power Window		✓ (Driver: Auto Up/Down & Safety)
Roof	Inside Rear View Mirror		ECM
	Sunvisor	Vanity Mirror	✓
		With Illumination	✓
	Sunroof		Power Sunroof With one touch Safety

Specifications

Segment		GLS		
Seat	Seat Upholstery		Beige White Accent Hi Grade Fabric	
	Front Seat	Headrest	Up/Down	
		Centre Console Box	✓	
		Seat Back Pocket	✓	
		Power Seat	Driver Only	
	Rear Seat	Headrest	Up/Down (LH/RH/Center)	
		Rear Seat Reclining	6:4 Folding	
	Lighting	Front	Head Lamp	LED
			Daytime Running Lamp	LED
Front Fog Lamps			LED	
Rear		Rear Combination Lamp	LED	
		High Mount Stop Lamp	LED	
		Rear Fog Lamp	LED	
Cabin		Front Personal Lamp	LED	
		WithSunglass Holder	✓	
		Room Lamp (2)	✓	
Instrument	Cluster Type		Supervision with 4.2" TFT LCD + Rheostat	
Comfort & Safety	Auto Light Control		✓	
	Parking Sensor		Rear	
	Cruise Control		✓	
	Steering Wheel Remote Control		✓	
	Power Outlet Store		✓	
	Hatchback	Luggage Net/Tray	Net	
	Utility	Luggage Screen	✓	

Segment		GLS	
AVN	Audio	Head Unit Size	Floating
		AM / FM Radio	✓
		MP3	✓
		Screen	8" Floating Display Screen
	Connectivity	USB / AUX	✓
		Bluetooth	✓
	Camera	Rear View Camera	✓
Heater & Air Conditioner	Antenna		Roof mounted
	Air Conditioner		Automatic with Climate Control
	Rear AC Ventilation		✓







*Whichever comes first
 **Terms and conditions apply

Disclaimer: For exact models, specifications and colours – please consult your Hyundai dealer. Some of the equipment illustrated or described in this brochure may not be supplied as standard equipment and may be available at extra cost. **Hyundai Nishat Motor (Pvt.) Ltd.** reserves the right to change specifications and equipment without prior notice.

Hyundai Nishat Motor (Pvt.) Ltd.

1-B, Aziz Avenue, Canal Bank Road, Gulberg V, Lahore
Phone +92-42-111 111 466, www.hyundai-nishat.com

    [hyundaipakistan](https://www.youtube.com/hyundaipakistan)

Dealer stamp

